

BASIS OF BEARINGS:

BEARINGS SHOWN HEREON ARE BASED ON THE WEST PROPERTY LINE OF NORTHPOINT MEADOWS SECTION 2 (N2°33'16"W) AS SHOWN OF RECORD IN PLAT CABINET 1 SLIDES 451-451C, RECORDER'S OFFICE, DELAWARE COUNTY, OHIO.

BENCH MARKS: (NAVD 88)

BENCH MARK ELEVATIONS ARE LOCATED ON THE SURVEY CONTROL POINTS AND ARE AS SHOWN HEREON.

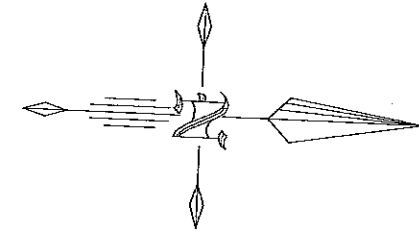
EXISTING UTILITIES:

UTILITIES SHOWN HEREON ARE PART FROM FIELD SURVEY LOCATIONS (VISIBLE) AND PART FROM RECORDS OF RESPECTIVE UTILITY COMPANIES AND DO NOT NECESSARILY REPRESENT ALL UNDERGROUND UTILITIES TO, FROM AND UPON PREMISES SHOWN UPON THESE DRAWINGS. UNDERGROUND UTILITY LOCATIONS SHOWN ARE APPROXIMATE ONLY AND ARE TO BE FIELD VERIFIED PRIOR TO CONSTRUCTION.

GENERAL NOTES:

- EXISTING GROUND FEATURES WERE LOCATED IN THE FIELD AT ONLY THE LOCATIONS SHOWN ON THESE DRAWINGS, NOT THE ENTIRE LENGTH OF THE PROPOSED BIKEPATH.

POINT	NORTHING	EASTING
1044	181548.51989	1826887.77731
356	182018.52011	1826885.11935
355	182048.63889	1826883.06738
359	182343.15999	1826849.48809
357	182380.05050	1826808.64526
354	182422.00178	1826806.62286
391	182391.88206	1826808.07488
388	182360.90552	1827390.17859
387	182332.94399	1827435.75713

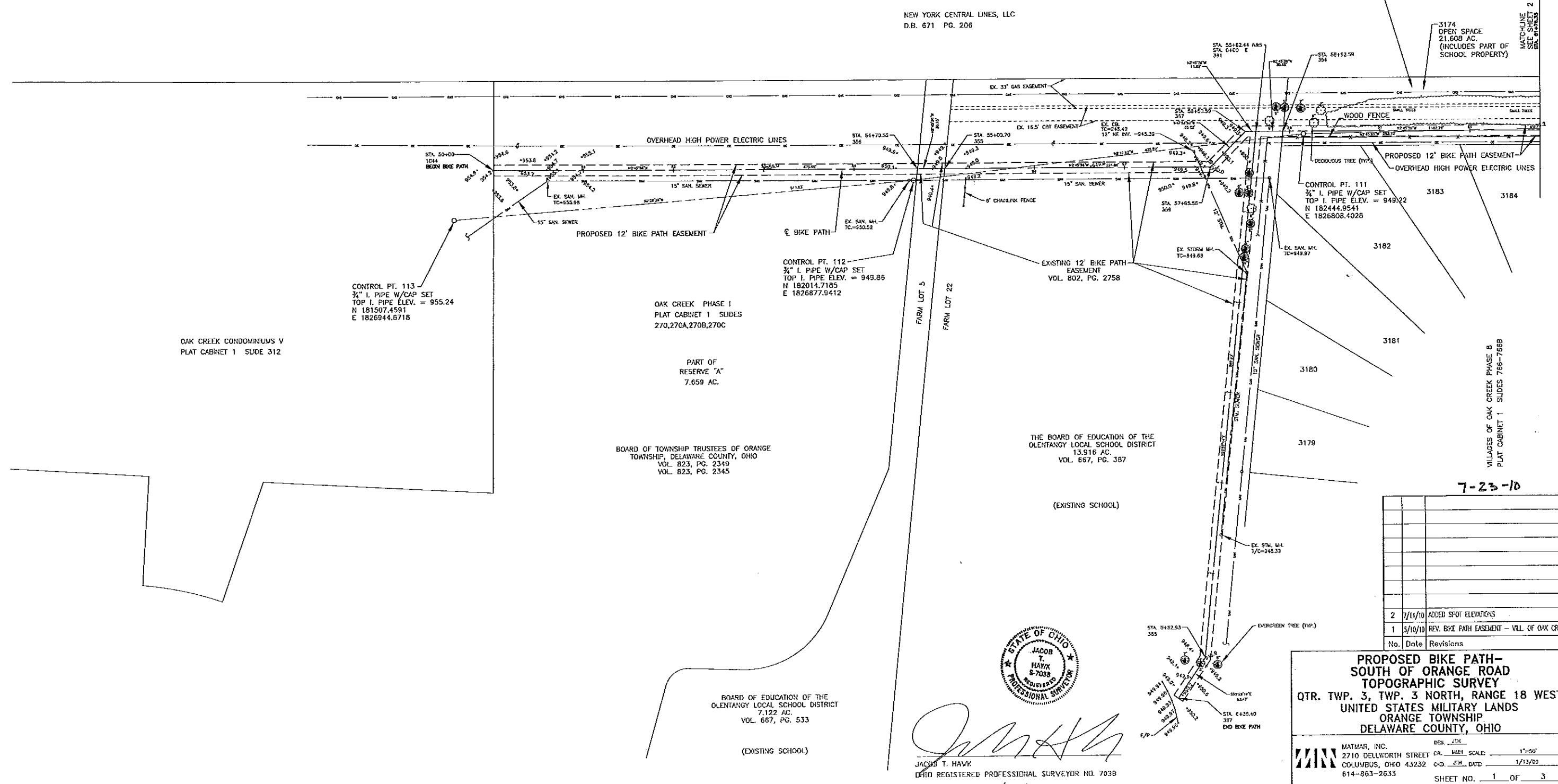


NEW YORK CENTRAL LINES, LLC
D.B. 671 PG. 206

THE VILLAGES OF OAK CREEK
HOMEOWNERS' ASSOCIATION, INC.
7.692 AC.
VOL. 342 PG. 783

3174
OPEN SPACE
21.608 AC.
(INCLUDES PART OF
SCHOOL PROPERTY)

MATCHLINE
SEE SHEET 2



CONTROL PT. 113
3/4" I. PIPE W/CAP SET
TOP I. PIPE ELEV. = 955.24
N 181507.4591
E 1826944.6718

CONTROL PT. 112
3/4" I. PIPE W/CAP SET
TOP I. PIPE ELEV. = 949.86
N 182014.7185
E 1826877.9412

CONTROL PT. 111
3/4" I. PIPE W/CAP SET
TOP I. PIPE ELEV. = 949.22
N 182444.9541
E 1826808.4028

OAK CREEK CONDOMINIUMS V
PLAT CABINET 1 SLIDE 312

OAK CREEK PHASE I
PLAT CABINET 1 SLIDES
270,270A,270B,270C

PART OF
RESERVE "A"
7.659 AC.

BOARD OF TOWNSHIP TRUSTEES OF ORANGE
TOWNSHIP, DELAWARE COUNTY, OHIO
VOL. 823, PG. 2349
VOL. 823, PG. 2345

THE BOARD OF EDUCATION OF THE
OLENTANGY LOCAL SCHOOL DISTRICT
13.916 AC.
VOL. 667, PG. 387

BOARD OF EDUCATION OF THE
OLENTANGY LOCAL SCHOOL DISTRICT
7.122 AC.
VOL. 667, PG. 533

(EXISTING SCHOOL)

(EXISTING SCHOOL)



Jacob T. Hawk
JACOB T. HAWK
OHIO REGISTERED PROFESSIONAL SURVEYOR NO. 7038

7/14/10

7-23-10

No.	Date	Revisions
2	7/14/10	ADDED SPOT ELEVATIONS
1	5/10/10	REV. BIKE PATH EASEMENT - VILL. OF OAK CREEK

PROPOSED BIKE PATH - SOUTH OF ORANGE ROAD TOPOGRAPHIC SURVEY
QTR. TWP. 3, TWP. 3 NORTH, RANGE 18 WEST
UNITED STATES MILITARY LANDS
ORANGE TOWNSHIP
DELAWARE COUNTY, OHIO

DES. JTH
MATMAR, INC.
2710 DELLWORTH STREET
COLUMBUS, OHIO 43232
614-863-2633
APPROVED BY: JTH PROJECT NO. 750-02

CR. MEN. SCALE: 1"=50'
CD. JTH. DATE: 7/13/09
SHEET NO. 1 OF 3

BASIS OF BEARINGS:

BEARINGS SHOWN HEREON ARE BASED ON THE WEST PROPERTY LINE OF NORTHPOINT MEADOWS SECTION 2 (N2°53'16"W) AS SHOWN OF RECORD IN PLAT CABINET 1 SLIDES 451-451C, RECORDER'S OFFICE, DELAWARE COUNTY, OHIO.

BENCH MARKS: (NAVD 88)

BENCH MARK ELEVATIONS ARE LOCATED ON THE SURVEY CONTROL POINTS AND ARE AS SHOWN HEREON.

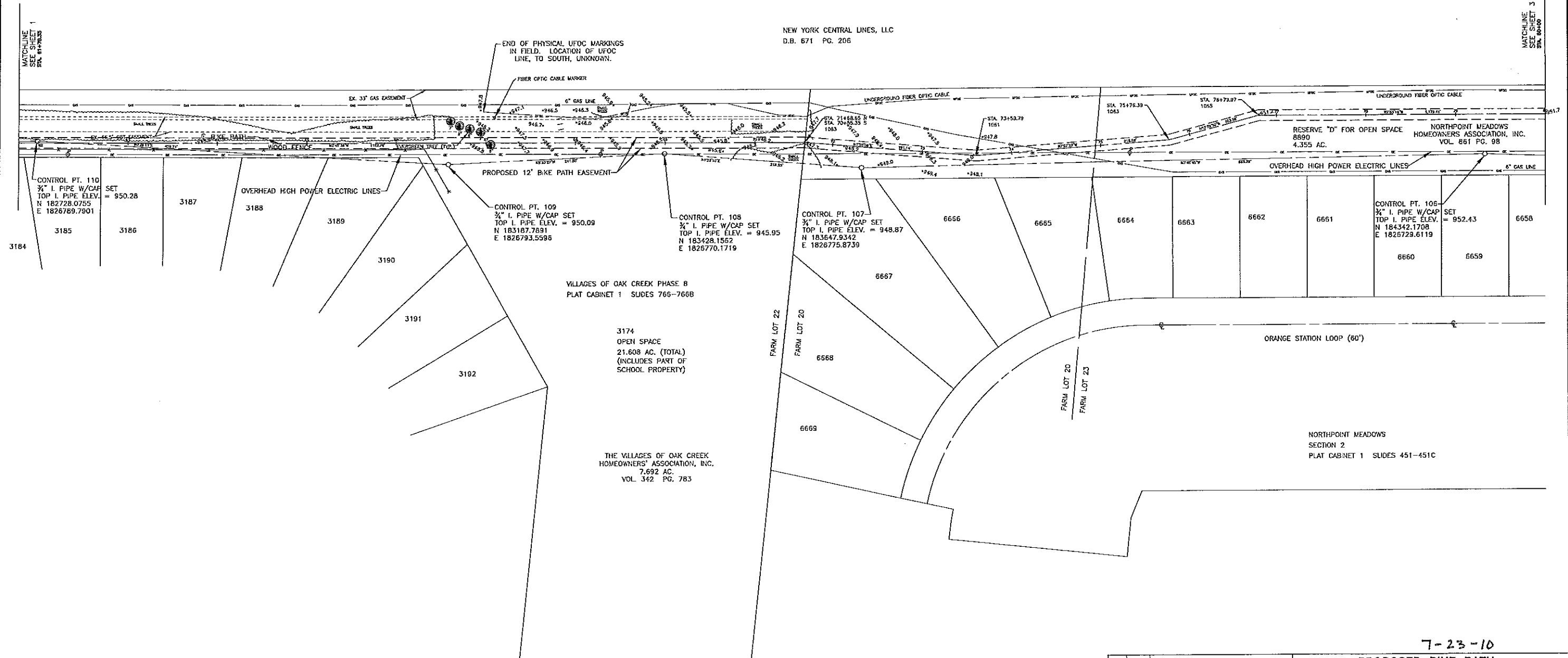
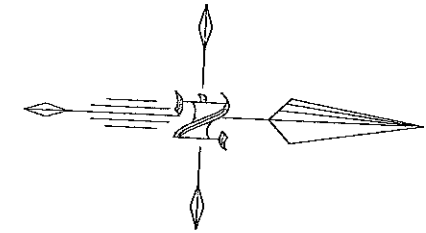
EXISTING UTILITIES:

UTILITIES SHOWN HEREON ARE PART FROM FIELD SURVEY LOCATIONS (VISIBLE) AND PART FROM RECORDS OF RESPECTIVE UTILITY COMPANIES AND DO NOT NECESSARILY REPRESENT ALL UNDERGROUND UTILITIES TO, FROM AND UPON PREMISES SHOWN UPON THESE DRAWINGS. UNDERGROUND UTILITY LOCATIONS SHOWN ARE APPROXIMATE ONLY AND ARE TO BE FIELD VERIFIED PRIOR TO CONSTRUCTION.

GENERAL NOTES:

- EXISTING GROUND FEATURES WERE LOCATED IN THE FIELD AT ONLY THE LOCATIONS SHOWN ON THESE DRAWINGS, NOT THE ENTIRE LENGTH OF THE PROPOSED BIKEPATH.

POINT	NORTHING	EASTING
1061	183774.44304	1826757.03143
1063	183989.36267	1826730.16969
1065	184087.87542	1826598.16589
1083	183583.41280	1826750.63311



7-23-10

PROPOSED BIKE PATH - SOUTH OF ORANGE ROAD TOPOGRAPHIC SURVEY
 QTR. TWP. 3, TWP. 3 NORTH, RANGE 18 WEST
 UNITED STATES MILITARY LANDS
 ORANGE TOWNSHIP
 DELAWARE COUNTY, OHIO

No.	Date	Revisions
2	7/14/10	ADDED SPOT ELEVATIONS
1	5/10/10	REV. BIKE PATH EASEMENT - VILL. OF OAK CREEK

MATMAR, INC.
 2710 DELLWORTH STREET
 COLUMBUS, OHIO 43232
 614-863-2633

DES. JTH
 DR. MSE SCALE: 1"=50'
 CRO. JTH DATE: 1/13/09

APPROVED BY: JTH PROJECT NO. 750-02

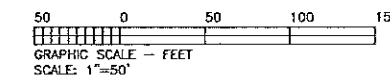
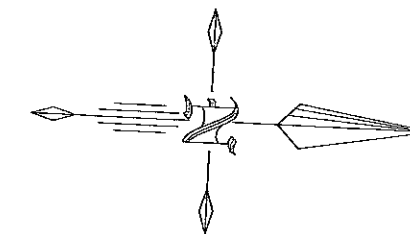
SHEET NO. 2 OF 3

POINT	NORTHING	EASTING
1506	185265.78248	1826638.74770
1604	185271.81091	1826638.44360
1603	185262.90941	1826789.11180
1606	185268.88414	1826825.09180
1605	185268.99193	1826825.74087
1521	185260.21628	1826874.05915
8110	185287.2573	1826890.5037
8118	185363.3942	1827071.9072
8119	185370.4263	1827088.4924
8106	185354.0166	1827336.2251

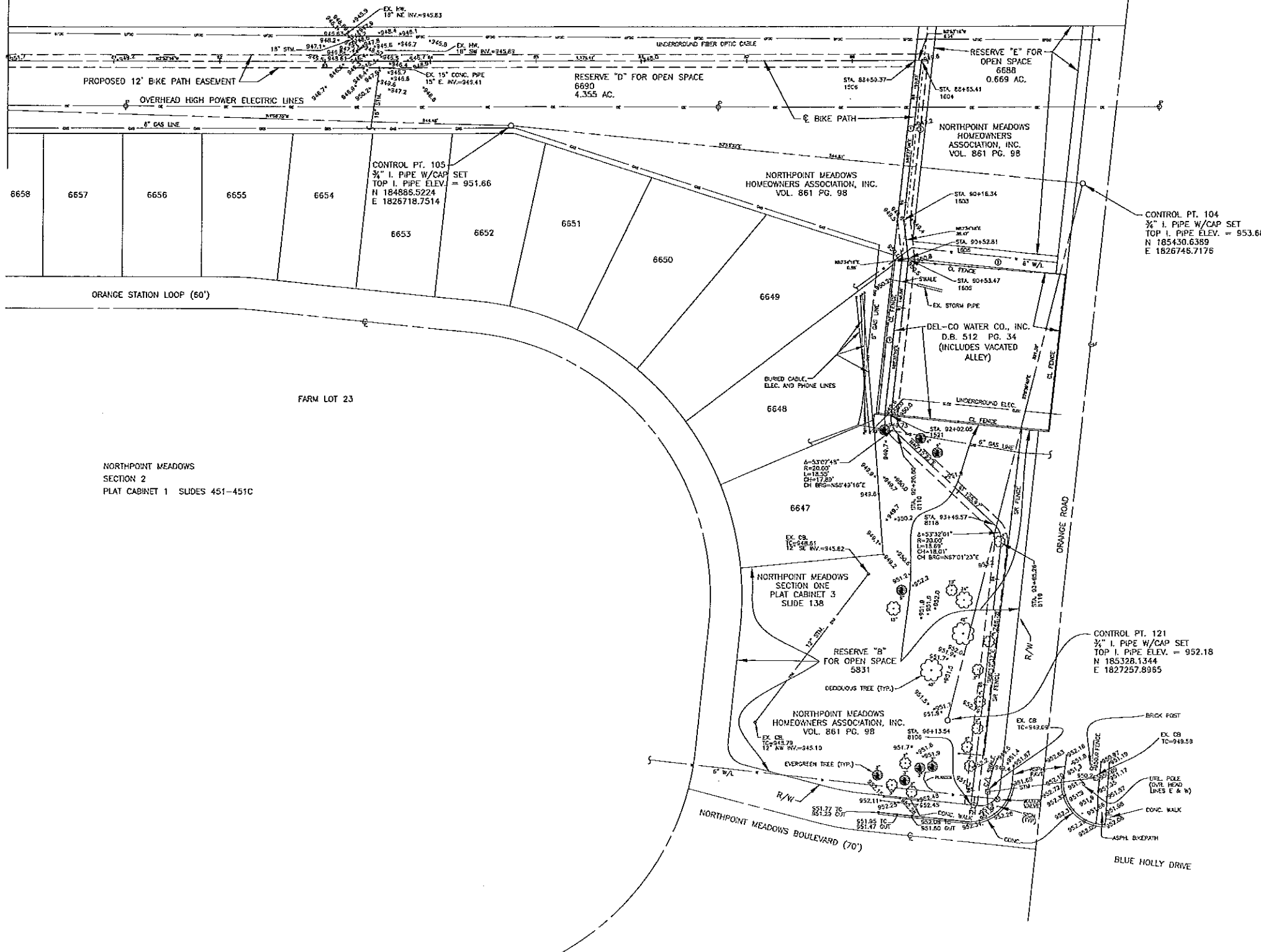
⊙ MARONDA HOMES, INC.
TRACT I - PARCEL II
O.R. 209 PG.1105
(PART OF VACATED ALLEY)

⊙ MARONDA HOMES, INC.
TRACT I - PARCEL I
O.R. 209 PG.1106
(PART OF VACATED ALLEY)

NEW YORK CENTRAL LINES, LLC
D.B. 671 PG. 206



MATCHLINE
SEE SHEET 2
STA. 60+00



BASIS OF BEARINGS:

BEARINGS SHOWN HEREON ARE BASED ON THE WEST PROPERTY LINE OF NORTHPOINT MEADOWS SECTION 2 (N2°53'16"W) AS SHOWN OF RECORD IN PLAT CABINET 1 SLIDES 451-451C, RECORDER'S OFFICE, DELAWARE COUNTY, OHIO.

BENCH MARKS: (NAVD 88)

BENCH MARK ELEVATIONS ARE LOCATED ON THE SURVEY CONTROL POINTS AND ARE AS SHOWN HEREON.

EXISTING UTILITIES:

UTILITIES SHOWN HEREON ARE PART FROM FIELD SURVEY LOCATIONS (MSABLE) AND PART FROM RECORDS OF RESPECTIVE UTILITY COMPANIES AND DO NOT NECESSARILY REPRESENT ALL UNDERGROUND UTILITIES TO, FROM AND UPON PREMISES SHOWN UPON THESE DRAWINGS. UNDERGROUND UTILITY LOCATIONS SHOWN ARE APPROXIMATE ONLY AND ARE TO BE FIELD VERIFIED PRIOR TO CONSTRUCTION.

GENERAL NOTES:

- EXISTING GROUND FEATURES WERE LOCATED IN THE FIELD AT ONLY THE LOCATIONS SHOWN ON THESE DRAWINGS, NOT THE ENTIRE LENGTH OF THE PROPOSED BIKEPATH.

7-23-10

**PROPOSED BIKE PATH -
SOUTH OF ORANGE ROAD
TOPOGRAPHIC SURVEY**

QTR. TWP. 3, TWP. 3 NORTH, RANGE 18 WEST
UNITED STATES MILITARY LANDS
ORANGE TOWNSHIP
DELAWARE COUNTY, OHIO

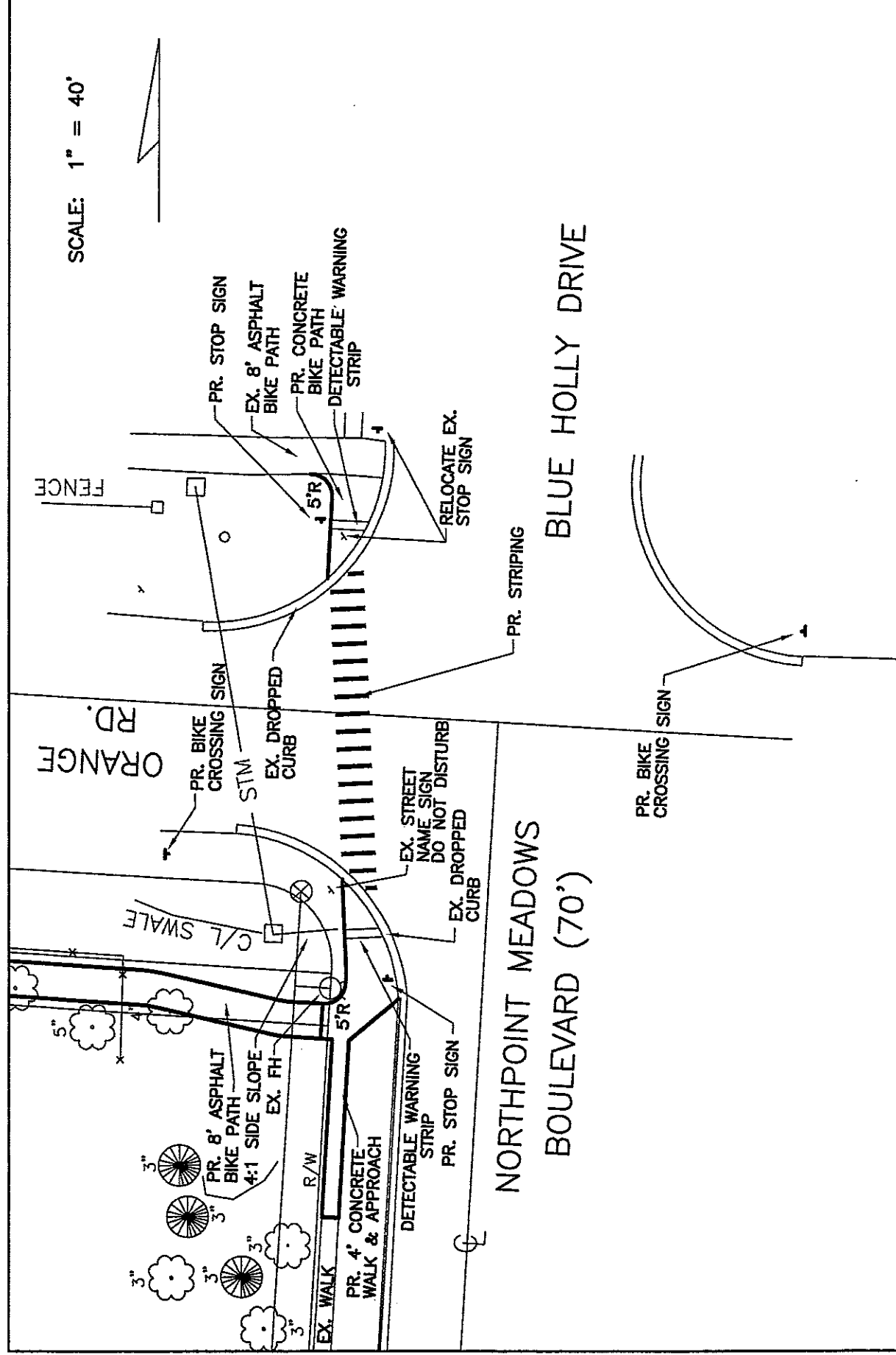
No.	Date	Revisions
2	7/11/10	ADDED SPOT ELEVATIONS & ADDITIONAL TOPO
1	9/23/09	CHANGED EASEMENT ALIGNMENT - RESERVE "B"

DES. JTH
MATHAR, INC.
2710 DELLWORTH STREET
COLUMBUS, OHIO 43232
614-863-2633

DR. LABEL SCALE: 1"=50'
C.D. DATE: 1/13/09

SHEET NO. 3 OF 3

APPROVED BY: JTH PROJECT NO. 750-02



SPECIFICATIONS: CITY OF COLUMBUS CONSTRUCTION AND MATERIAL SPECIFICATIONS, CURRENT EDITION

2' WIDE DETECTABLE WARNING STRIPS SIMILAR TO STANDARD DRAWING 2319 DR. A

4" THICK CONCRETE AND APPROACH PER STANDARD DRAWING 2300 DR. A. SLOPE TO MEET ADA REQUIREMENTS. NO RAMPS ARE REQUIRED TO MEET 2% MAX. SLOPE REQUIREMENT.

STRIPING SHALL BE CROSSWALK LINE PER ITEM 642 (PAINT) ORIENTED PERPENDICULAR TO CROSSWALK AT 4' C/C SPACING

STOP SIGNS SHALL BE R1-1 (24") PER ITEM 630. PROVIDE SLEEVE IN CONCRETE. BIKE CROSSING SIGN SHALL BE R9-6.